

# B1

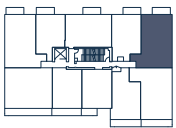
*Alma Building*

## 2 Bedroom 2 Bathroom & Flex

Interior 915 SF  
Exterior 71-437 SF  
Total 986-1,352 SF

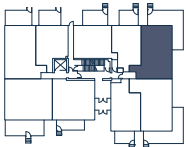


LEVEL 2-3



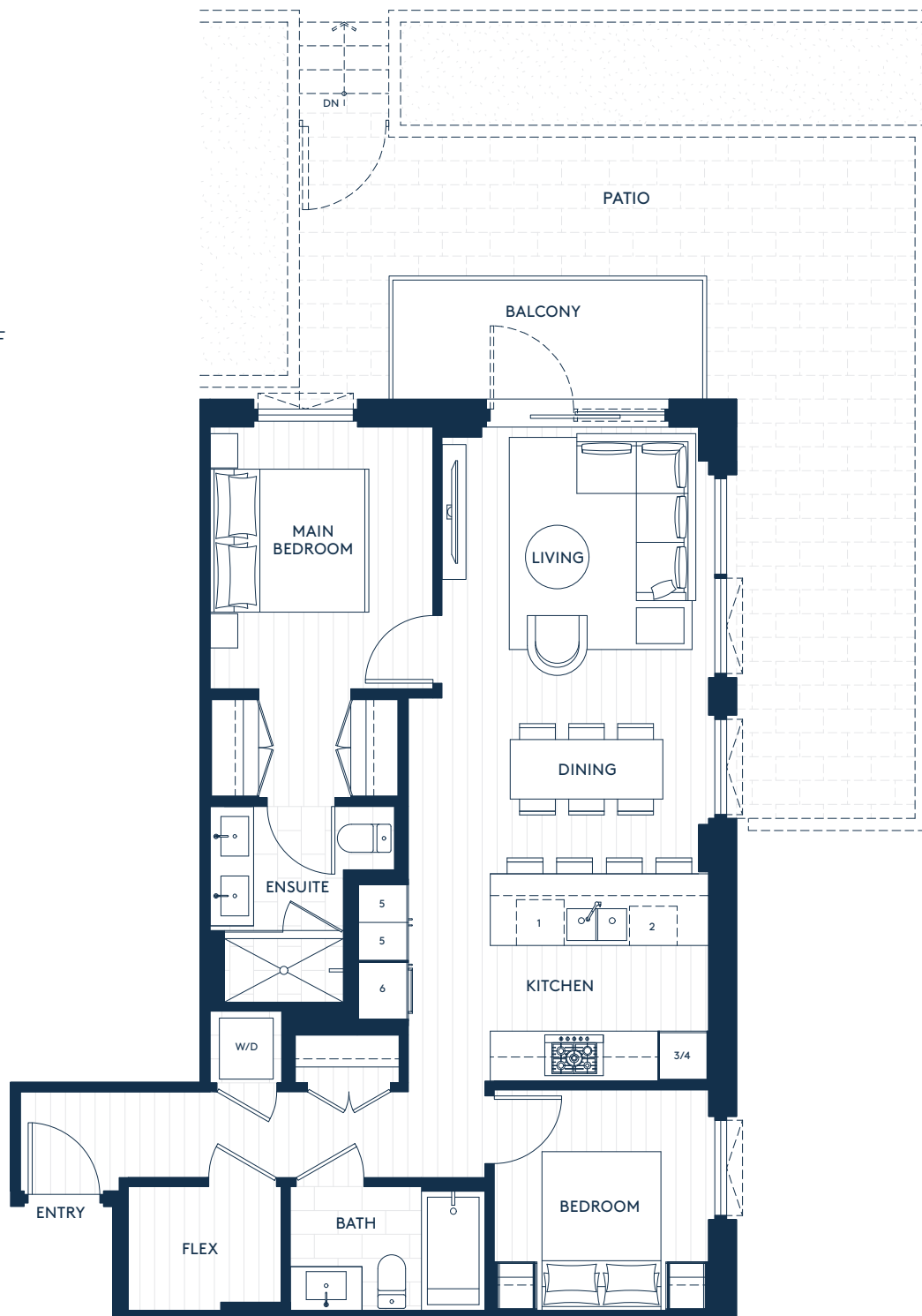
*Asb St*

LEVEL 1



*Asb St*

1. Fully Integrated Dishwasher
2. Under-counter Wine Fridge
3. Built in Coffee Machine
4. Speed Oven
5. Pantry
6. Fridge



This is not an offering for sale. Any such offering may only be made after filing a Disclosure Statement. The developer reserves the right to make modifications to building design, dimensions, specifications and floorplans. Square footages are based on preliminary architectural measurements and are approximate only. These marketing materials do not constitute a representation or warranty of the finished product. Sales powered by MLA Canada Realty. E.&O.E.